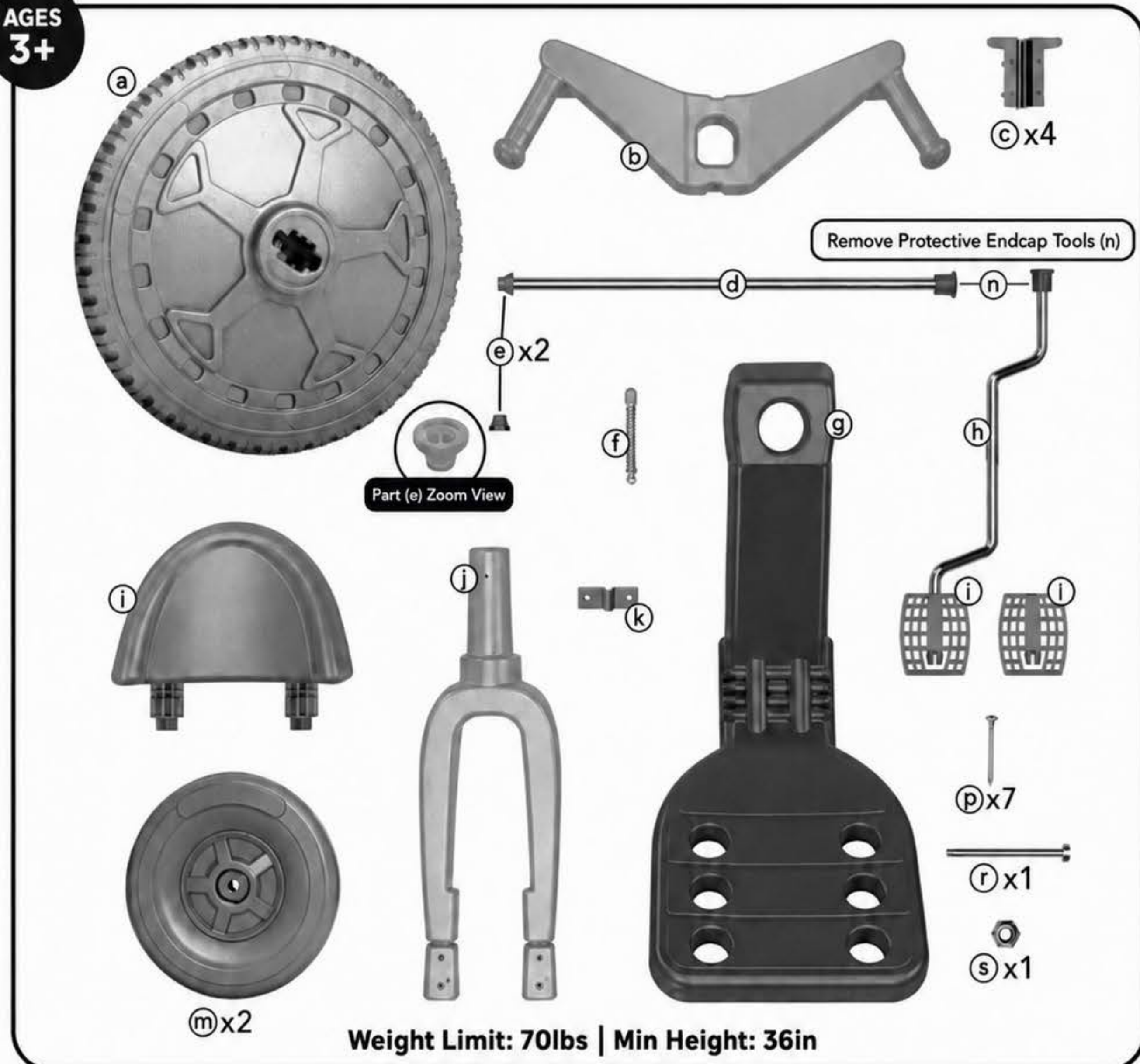


Thanks for your purchase - get ready for the ride of your life! If you have any issues with the assembly of your Big Wheel please reach out to our team online:

[www.OriginalBigWheel.us](http://www.OriginalBigWheel.us)

AGES 3+

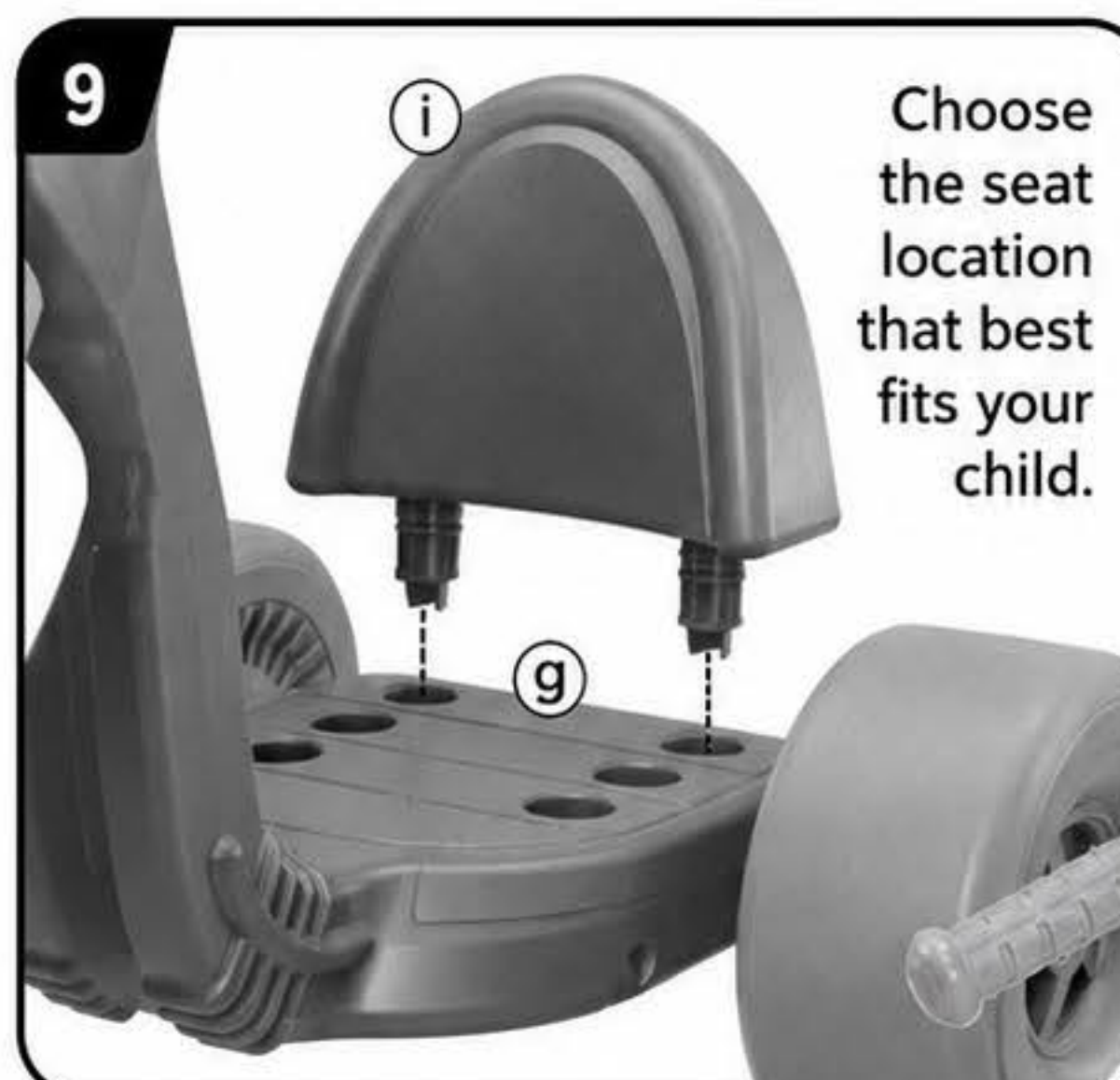
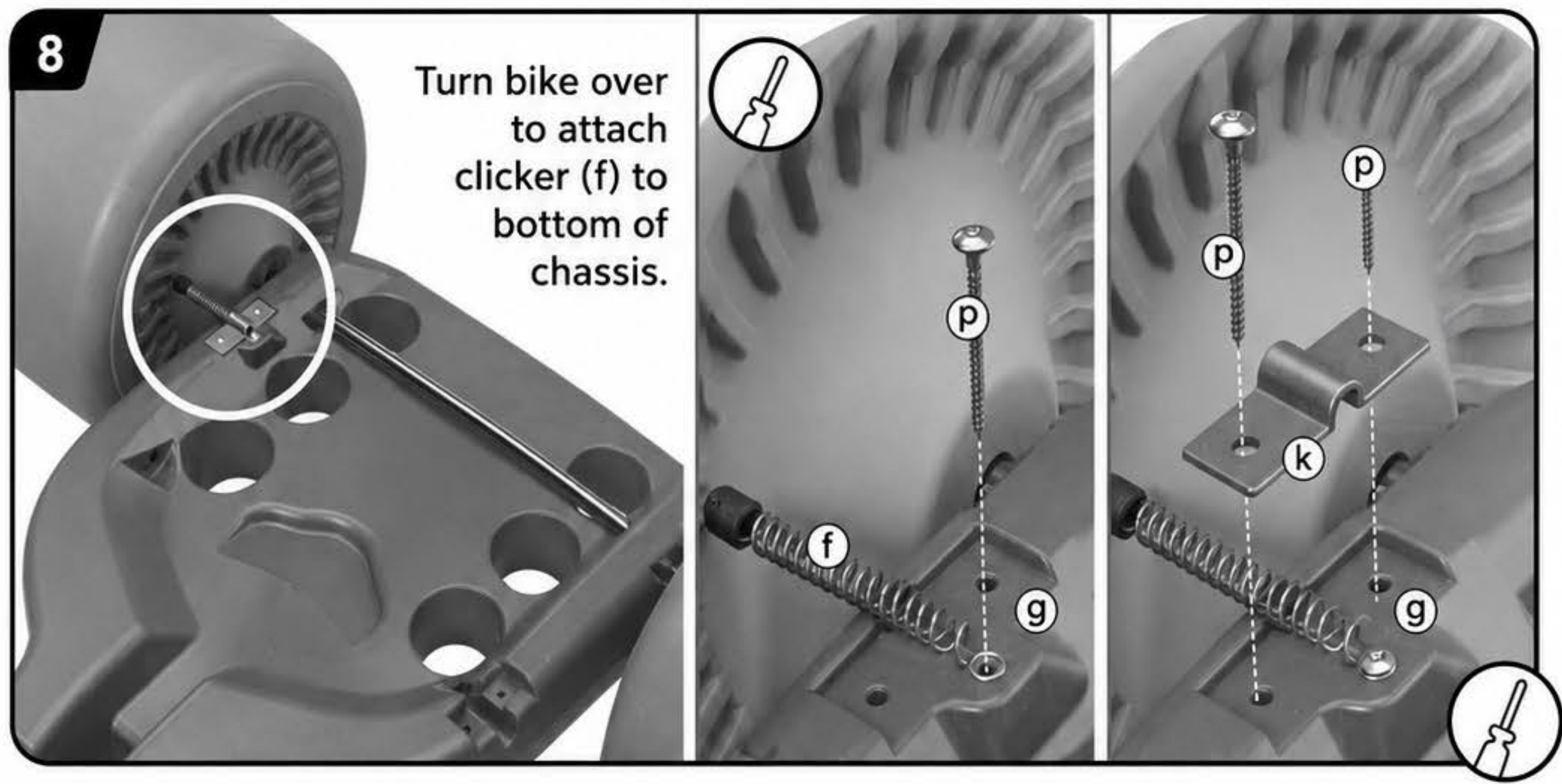


**WARNING:** TO AVOID SERIOUS INJURY: ADULT SUPERVISION NOW. USE THIS TOY HAS NO BRAKES. NEVER USE NEAR STREETS, SWIMMING POOLS, HILLS, STEPS (2) AND DROP OFFS. WEAR SHOES WHEN USING THIS PRODUCT. NEVER ALLOW MORE THAN 1 RIDER. RIDER WEIGHT SHOULD NOT EXCEED 70 LBS. CHECK REGULARLY FOR EXCESSIVE WEAR OR DAMAGE. IF PRODUCT IS DAMAGED, DISCARD IMMEDIATELY. ALWAYS WEAR A PROPERLY FITTED HELMET THAT COMPLIES WITH U.S. CONSUMER PRODUCT SAFETY COMMISSION (CPSC) STANDARDS. 16 CFR 1203. (HELMET NOT INCLUDED).

**WARNING:** ADULT ASSEMBLY REQUIRED- CHOKING HAZARD TO CHILDREN UNDER THE AGE OF 3 YEARS - CONTAINS SMALL PARTS PRIOR TO ASSEMBLY. PRODUCT CONTAINS SMALL PARTS OF ASSEMBLY HARDWARE. FOR YOUR CHILD'S SAFETY, ASSEMBLY BY AN ADULT IS REQUIRED. KEEP AWAY FROM SCREWDRIVER AND PLIERS.

**WARNING:** CHOKING HAZARD- SMALL PARTS. NOT FOR CHILDREN UNDER 3 YEARS. THE TOY SHOULD BE USED WITH CAUTION SINCE SKILL IS REQUIRED TO AVOID FALLS OR COLLISIONS CAUSING INJURY TO THE USER OR THIRD PARTIES.

©2024 Schylling Inc.



**Sticker Placement:**

**TIP:** Rub the wide, flat end of an Endcap Tool (n) over the stickers as you apply them to the Big Wheel. This will help press and flatten the stickers to ensure maximum adhesion.

